

ANTONG INDUSTRIAL CO.,LTD

[Http://antongcorp.com](http://antongcorp.com)

ANSI ASME B16.47 Ser. A MSS SP44 Flanges

*Dimensions, Sizes and Specification of ANSI ASME B 16.47 Ser.A MSS SP44 Flanges
Blind Flanges & Weld Neck Flanges*

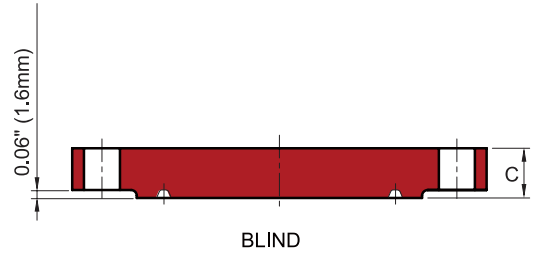
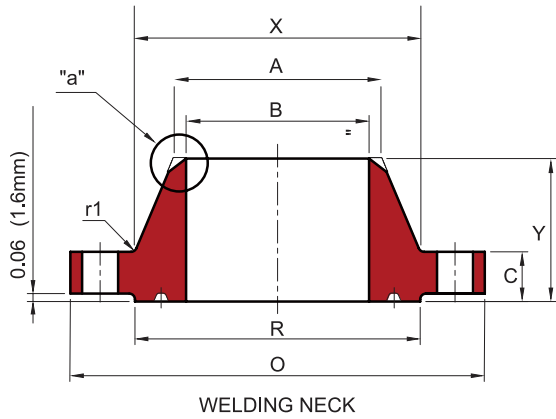
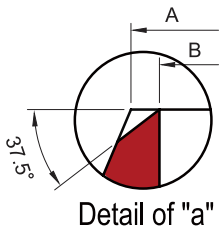


We supply welding neck flange, Blind flange on forged steel, carbon steel, stainless steel, alloy steel etc. 26 inch to 60 inch, pressure rating from class 150 to class 900 with raised face, flat face, ring joint (rj), rtj, male face, female face, tongue face and grooved face.



ANSI ASME

B16.47 Ser A MSS SP44 Class 150



CLASS150

Unit : mm

Nominal Pipe Size	O.D. OF Flange	Thickness		Length Through Hub	Diam. of Hub	Hub Diam. Top	Raised Face Diam.	Drilling			Diam. of Bolt (inch)	Fillet Radius Min.
		W.N.F	Blind					Diam. of Bolt Circle	No. of Bolt Holes	Diam. of Bolt Holes		
		O	C									
26	870.0	68.3	68.3	120.7	676.1	660.4	749.3	806.5	24	35.1	1 1/4	9.7
28	927.1	71.4	71.4	125.5	726.9	711.2	800.1	863.6	28	35.1	1 1/4	11.2
30	984.3	74.7	74.7	136.7	781.1	762.0	857.3	914.4	28	35.1	1 1/4	11.2
32	1060.5	81.0	81.0	144.5	831.9	812.8	914.4	977.9	28	41.1	1 1/2	11.2
34	1111.3	82.6	82.6	149.4	882.7	863.6	965.2	1028.7	32	41.1	1 1/2	12.7
36	1168.4	90.4	90.4	157.2	933.5	914.4	1022.4	1085.9	32	41.1	1 1/2	12.7
38	1238.3	87.4	87.4	157.2	990.6	965.2	1073.2	1149.4	32	41.1	1 1/2	12.7
40	1289.1	90.4	90.4	163.6	1041.4	1016.0	1124.0	1200.2	36	41.1	1 1/2	12.7
42	1346.2	96.8	96.8	171.5	1092.2	1066.8	1193.8	1257.3	36	41.1	1 1/2	12.7
44	1403.4	101.6	101.6	177.8	1143.0	1117.6	1244.6	1314.5	40	41.1	1 1/2	12.7
46	1454.2	103.1	103.1	185.7	1196.8	1168.4	1295.4	1365.3	40	41.1	1 1/2	12.7
48	1511.3	108.0	108.0	192.0	1247.6	1219.2	1358.9	1422.4	44	41.1	1 1/2	12.7
50	1568.5	111.3	111.3	203.2	1301.8	1270.0	1409.7	1479.6	44	47.8	1 3/4	12.7
52	1625.6	115.8	115.8	209.6	1352.6	1320.8	1460.5	1536.7	44	47.8	1 3/4	12.7
54	1682.8	120.7	120.7	215.9	1403.4	1371.6	1511.3	1593.9	44	47.8	1 3/4	12.7
56	1746.3	124.0	124.0	228.6	1457.5	1422.4	1574.8	1651.0	48	47.8	1 3/4	12.7
58	1803.4	128.5	128.5	235.0	1508.3	1473.2	1625.6	1708.2	48	47.8	1 3/4	12.7
60	1854.2	131.8	131.8	239.8	1559.1	1524.0	1676.4	1759.0	52	47.8	1 3/4	12.7

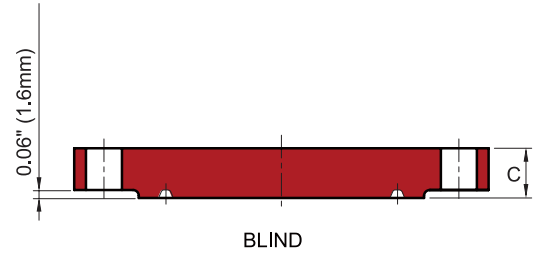
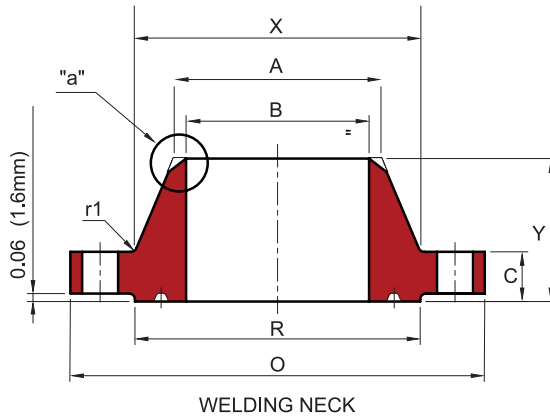
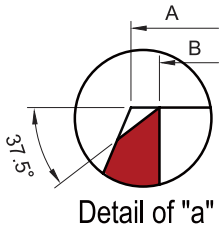
NOTES

B = Bore size to be specified by customer.



ANSI ASME

B16.47 Ser A MSS SP44 Class 300



CLASS300

Unit : mm

Nominal Pipe Size	O.D. OF Flange	Thickness		Length Through Hub	Diam. of Hub	Hub Diam. Top	Raised Face Diam.	Drilling			Diam. of Bolt (inch)	Fillet Radius Min.
		W.N.F	Blind					Diam. of Bolt Circle	No. of Bolt Holes	Diam. of Bolt Holes		
	O	C	C	Y	X	A	R					r1
26	971.6	79.2	84.1	184.2	720.9	660.4	749.3	876.3	28	44.5	1 5/8	9.7
28	1035.1	85.9	90.4	196.9	774.7	711.2	800.1	939.8	28	44.5	1 5/8	11.2
30	1092.2	91.9	95.3	209.6	827.0	762.0	857.3	997.0	28	47.8	1 3/4	11.2
32	1149.4	98.6	100.1	222.3	881.1	812.8	914.4	1054.1	28	50.8	1 7/8	11.2
34	1206.5	101.6	104.6	231.6	936.8	863.6	965.2	1104.9	28	50.8	1 7/8	12.7
36	1270.0	104.6	111.3	241.3	990.6	914.4	1022.4	1168.4	32	53.8	2	12.7
38	1168.4	108.0	108.0	180.8	993.6	965.2	1028.7	1092.2	32	41.1	1 1/2	12.7
40	1238.3	114.3	114.3	193.5	1047.8	1016.0	1085.9	1155.7	32	44.5	1 5/8	12.7
42	1289.1	119.1	119.1	200.2	1098.6	1066.8	1136.7	1206.5	32	44.5	1 5/8	12.7
44	1352.6	124.0	124.0	206.2	1149.4	1117.6	1193.8	1263.7	32	47.8	1 3/4	12.7
46	1416.1	128.5	128.5	215.9	1203.5	1168.4	1244.6	1320.8	28	50.8	1 7/8	12.7
48	1466.9	133.4	133.4	223.8	1254.3	1219.2	1301.8	1371.6	32	50.8	1 7/8	12.7
50	1530.4	139.7	139.7	231.6	1305.1	1270.0	1358.9	1428.8	32	53.8	2	12.7
52	1581.2	144.5	144.5	238.3	1355.9	1320.8	1409.7	1479.6	32	53.8	2	12.7
54	1657.4	152.4	152.4	252.5	1409.7	1371.6	1466.9	1549.4	28	60.5	2 1/4	12.7
56	1708.2	153.9	153.9	260.4	1463.5	1422.4	1517.7	1600.2	28	60.5	2 1/4	12.7
58	1759.0	158.8	158.8	266.7	1514.3	1473.2	1574.8	1651.0	32	60.5	2 1/4	12.7
60	1809.8	163.6	163.6	273.1	1565.1	1524.0	1625.6	1701.8	32	60.5	2 1/4	12.7

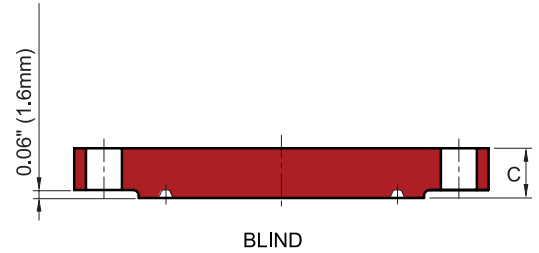
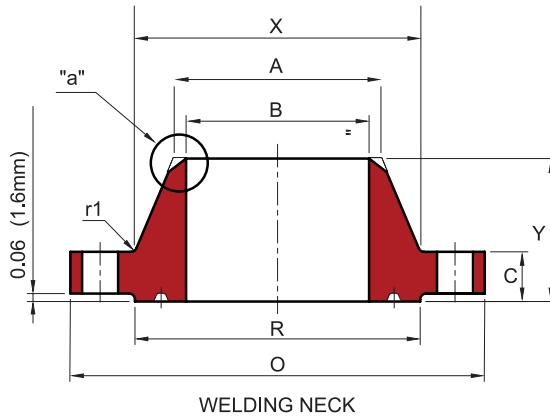
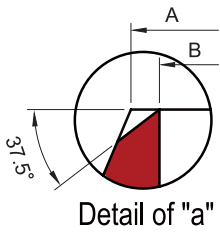
NOTES

B = Bore size to be specified by customer.



ANSI ASME

B16.47 Ser A MSS SP44 Class 600



CLASS600

Unit : mm

Nominal Pipe Size	O.D. OF Flange	Thickness		Length Through Hub	Diam. of Hub	Hub Diam. Top	Raised Face Diam.	Drilling			Fillet Radius Min.	
		W.N.F	Blind					Diam. of Bolt Circle	No. of Bolt Holes	Diam. of Bolt Holes		Diam. of Bolt (inch)
		O	C									
26	1016.0	108.0	125.5	222.3	747.8	660.4	749.3	914.4	28	50.8	1 7/8	12.7
28	1073.2	111.3	131.8	235.0	803.1	711.2	800.1	965.2	28	53.8	2	12.7
30	1130.3	114.3	139.7	247.7	862.1	762.0	857.3	1022.4	28	53.8	2	12.7
32	1193.8	117.3	147.6	260.4	917.4	812.8	914.4	1079.5	28	60.5	2 1/4	12.7
34	1244.6	120.7	153.9	269.7	973.1	863.6	965.2	1130.3	28	60.5	2 1/4	14.2
36	1314.5	124.0	162.1	282.4	1031.7	914.4	1022.4	1193.8	28	66.5	2 1/2	14.2
38	1270.0	152.4	155.4	254.0	1022.4	965.2	1054.1	1162.1	28	60.5	2 1/4	14.2
40	1320.8	158.8	162.1	263.7	1073.2	1016.0	1111.3	1212.9	32	60.5	2 1/4	14.2
42	1403.4	168.1	171.5	279.4	1127.3	1066.8	1168.4	1282.7	28	66.5	2 1/2	14.2
44	1454.2	173.0	177.8	289.1	1181.1	1117.6	1225.6	1333.5	32	66.5	2 1/2	14.2
46	1511.3	179.3	185.7	300.0	1234.9	1168.4	1276.4	1390.7	32	66.5	2 1/2	14.2
48	1593.9	189.0	195.3	316.0	1289.1	1219.2	1333.5	1460.5	32	73.2	2 3/4	14.2
50	1670.1	196.9	203.2	328.7	1343.2	1270.0	1384.3	1524.0	28	79.2	3	14.2
52	1720.9	203.2	209.6	336.6	1394.0	1320.8	1435.1	1574.8	32	79.2	3	14.2
54	1778.0	209.6	217.4	349.3	1447.8	1371.6	1492.3	1632.0	32	79.2	3	14.2
56	1854.2	217.4	225.6	362.0	1501.6	1422.4	1543.1	1695.5	32	85.9	3 1/4	15.7
58	1905.0	222.3	231.6	369.8	1552.4	1473.2	1600.2	1746.3	32	85.9	3 1/4	15.7
60	1993.9	233.4	242.8	388.9	1609.9	1524.0	1657.4	1822.5	28	91.9	3 1/2	17.5

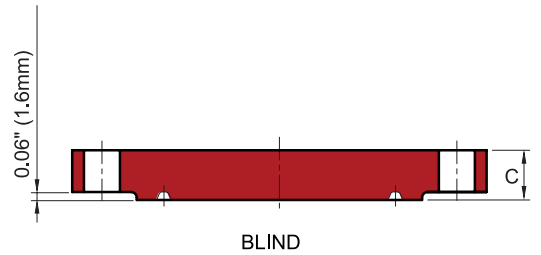
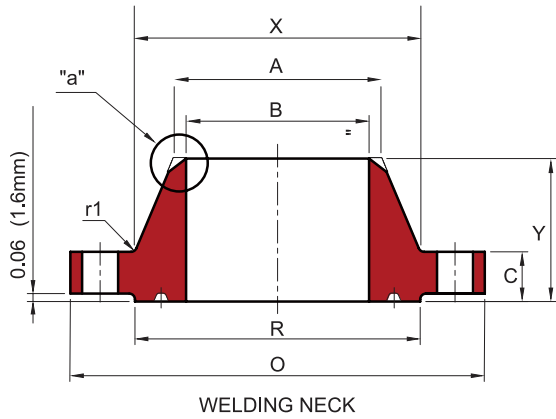
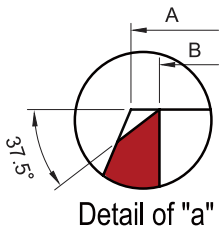
NOTES

B = Bore size to be specified by customer.



ANSI ASME

B16.47 Ser A MSS SP44 Class 900



CLASS900

Unit : mm

Nominal Pipe Size	O.D. OF Flange	Thickness		Length Through Hub	Diam. of Hub	Hub Diam. Top	Raised Face Diam.	Drilling			Diam. of Bolt (inch)	Fillet Radius Min.
		W.N.F	Blind					Diam. of Bolt Circle	No. of Bolt Holes	Diam. of Bolt Holes		
		O	C									
26	1085.9	139.7	160.3	285.8	774.7	660.4	749.3	952.5	20	73.2	2 3/4	11.2
28	1168.4	142.7	171.5	298.5	831.9	711.2	800.1	1022.4	20	79.2	3	12.7
30	1231.9	149.4	182.4	311.2	889.0	762.0	857.3	1085.9	20	79.2	3	12.7
32	1314.5	158.8	193.5	330.2	946.2	812.8	914.4	1155.7	20	85.9	3 1/4	12.7
34	1397.0	165.1	204.7	349.3	1006.3	863.6	965.2	1225.6	20	91.9	3 1/2	14.2
36	1460.5	171.5	214.4	362.0	1063.8	914.4	1022.4	1289.1	20	91.9	3 1/2	14.2
38	1460.5	190.5	215.9	352.6	1073.2	965.2	1098.6	1289.1	20	91.9	3 1/2	19.1
40	1511.3	196.9	223.8	363.5	1127.3	1016.0	1162.1	1339.9	24	91.9	3 1/2	20.6
42	1562.1	206.2	231.6	371.3	1176.3	1066.8	1212.9	1390.7	24	91.9	3 1/2	20.6
44	1648.0	214.4	242.8	390.7	1234.9	1117.6	1270.0	1463.5	24	98.6	3 3/4	22.4
46	1733.6	225.6	255.5	411.0	1292.4	1168.4	1333.5	1536.7	24	104.6	4	22.4
48	1784.4	233.4	263.7	419.1	1343.2	1219.2	1384.3	1587.5	24	104.6	4	23.9
50	To be specified by customer.											
52												
54												
56												
58												
60												

NOTES

B = Bore size to be specified by customer.



blind flange dimensions

ANSI flange

ANSI flange dimension

ANSI flange specification

ANSI flange size

ansi flange standard

ANSI flange chart

weld neck flange

weld on flange

welded flange

welding flange

welding neck flange

weld neck flange

wurf flange dimension

rflw flange dimensions

b16.47 flange dimensions

asme flange

asme flange dimensions

blind flange

ANSI ASME B16.47 Ser. A MSS SP44 Flanges

*Dimensions, Sizes and Specification of ANSI ASME B 16.47 Ser.A MSS SP44 Flanges
Blind Flanges & Weld Neck Flanges*

More Information, please visit our website:

[Http://antongcorp.com](http://antongcorp.com)

ANTONG INDUSTRIAL CO.,LTD

[Http://antongcorp.com](http://antongcorp.com)

Mail: sales@antongcorp.com

Tel: 008631180763668